



Slimību profilakses un  
kontroles centrs

# Epidemiology of Hepatitis B & C in Latvia

Centre for Disease Prevention and Control of Latvia

2015 November 19





Slimību profilakses un  
kontrolē centrs

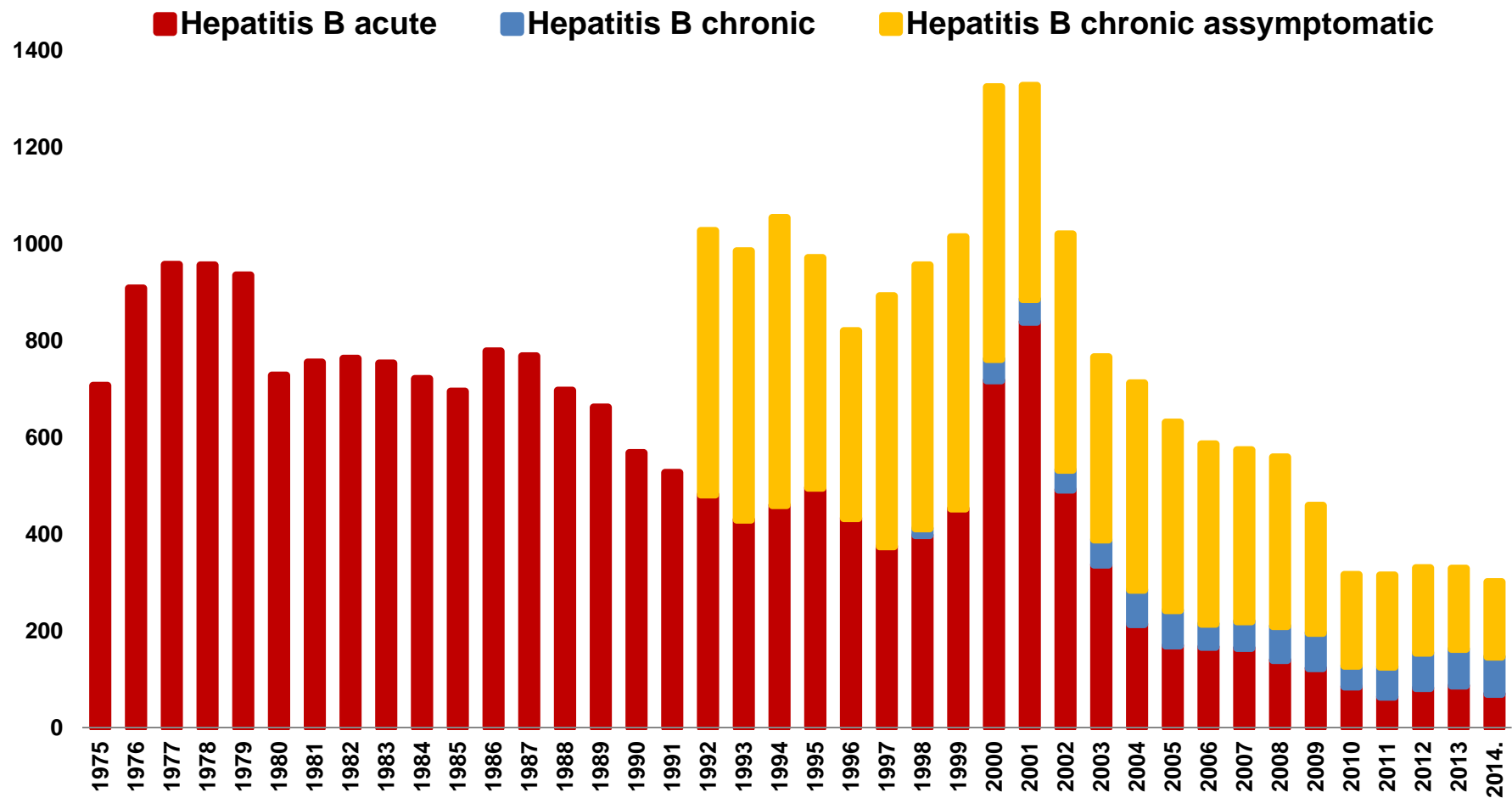
# Content

- **B/C hepatitis number of cases and incidence rates**
- **B/C hepatitis by age and gender**
- **Transmission route of acute hepatitis B/C**
- **B/C hepatitis in children**
- **Outbreaks of B/C hepatitis**
- **Conclusion**



Slimību profilakses un  
kontrolē centrs

# Surveillance of hepatitis B in Latvia

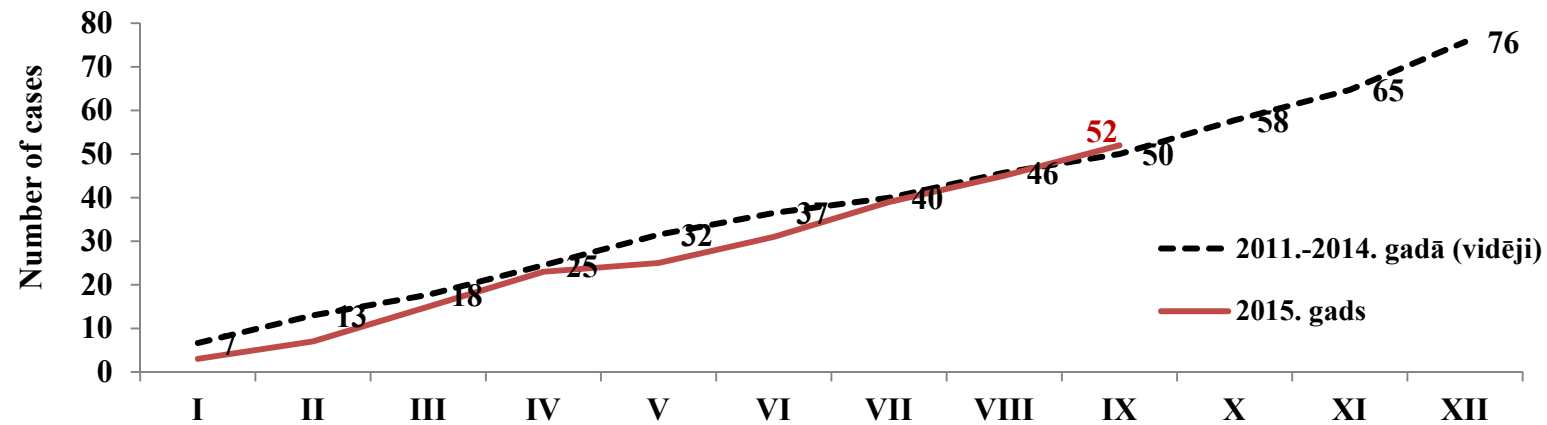




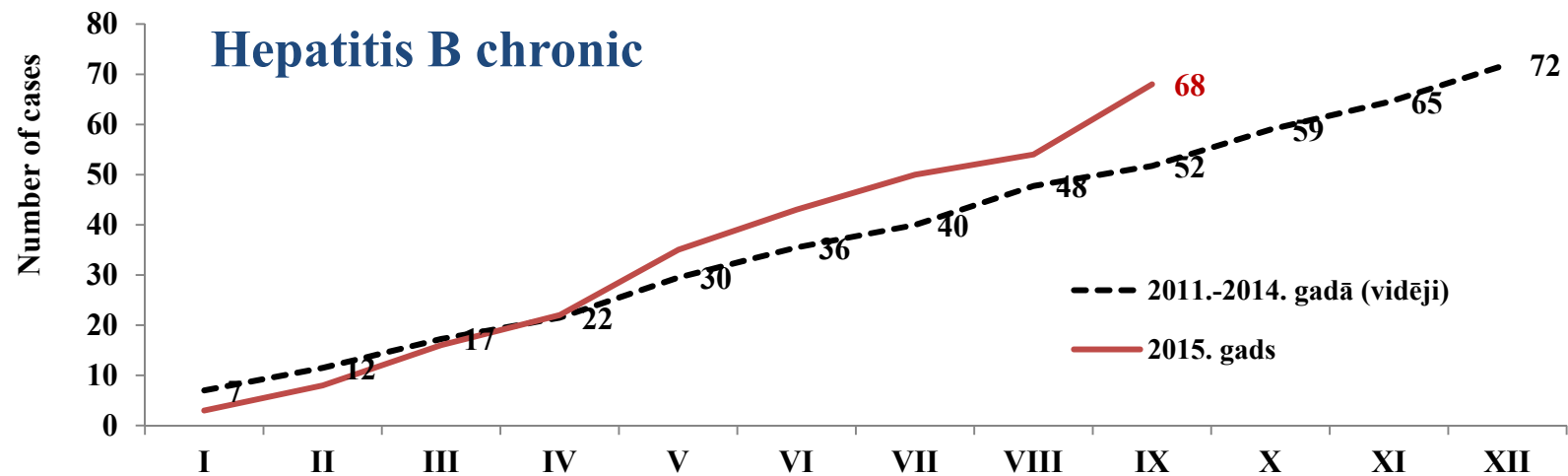
Slimību profilakses un  
kontroles centrs

# Hepatitis B acute and chronic in 2015 I-IX

## Hepatitis B acute



## Hepatitis B chronic

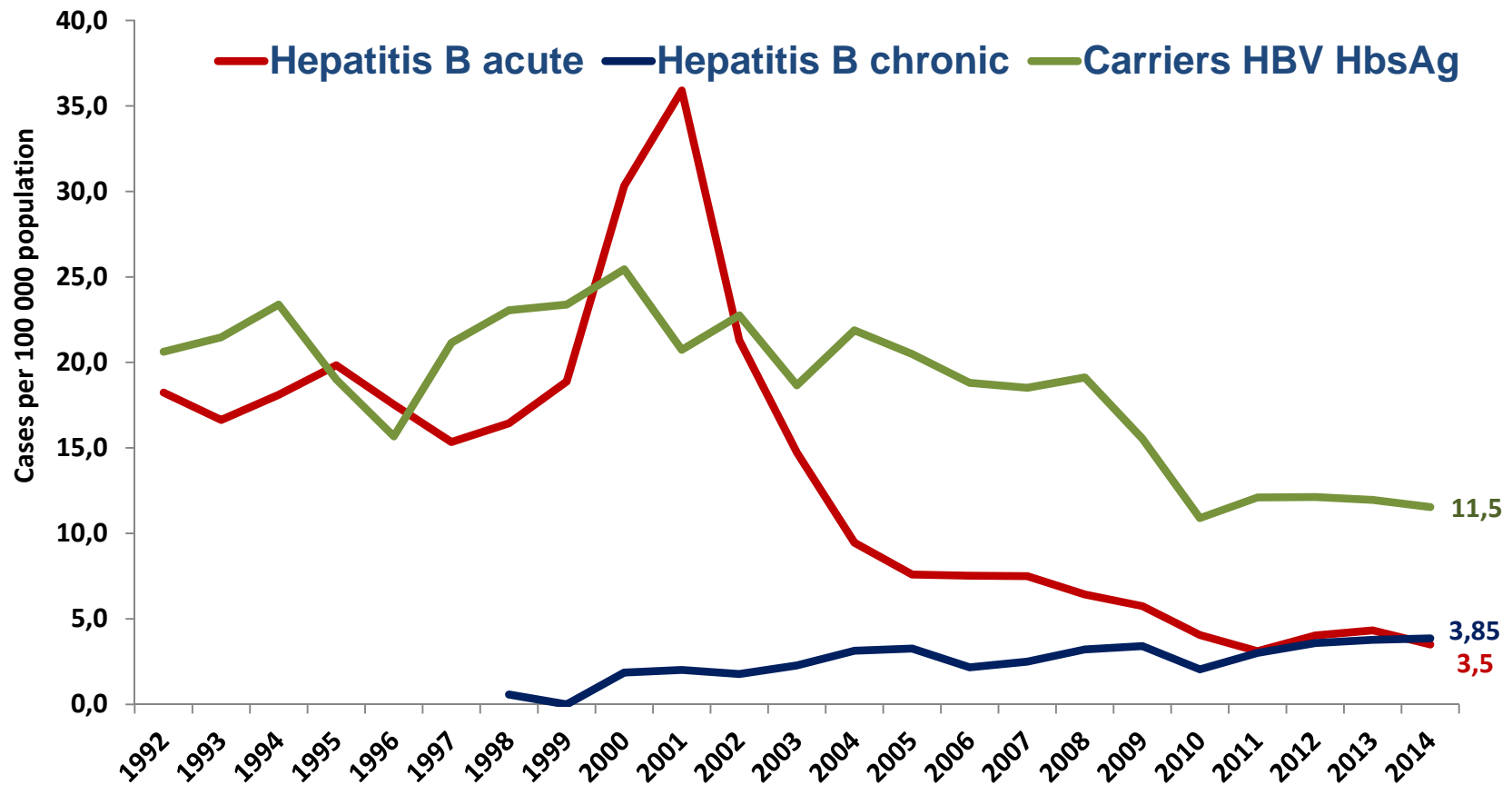




Slimibu profilakses un kontroles centrs

# Hepatitis B by date of notification

## Incidence rate per 100 000 population

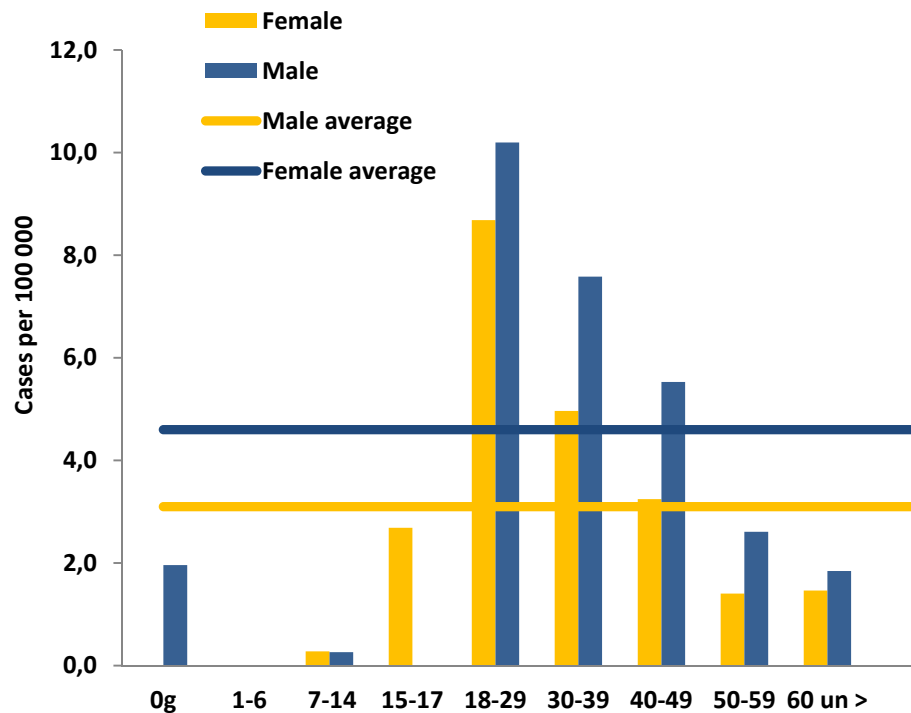




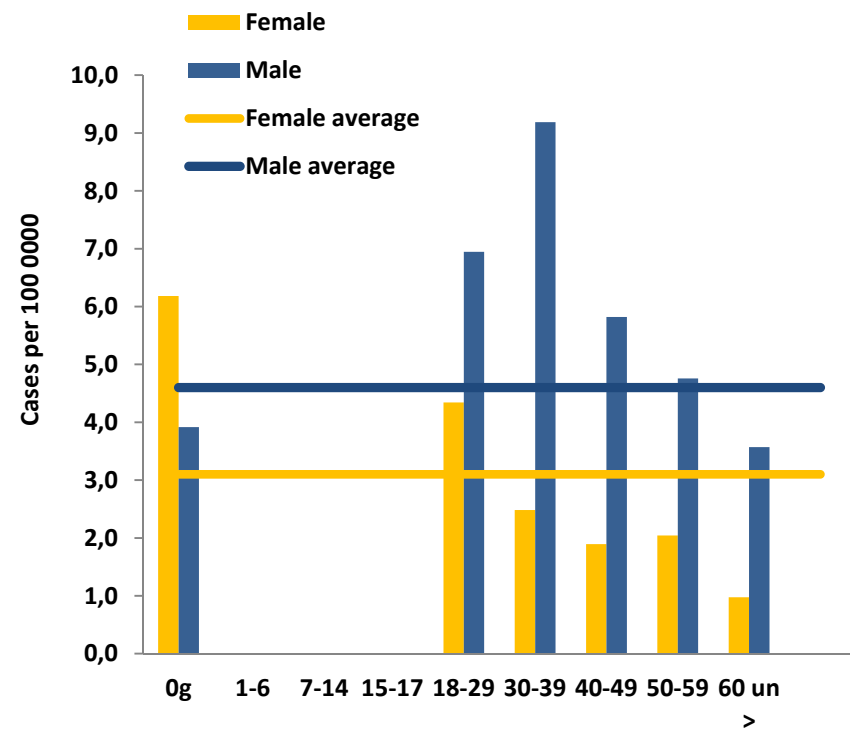
Slimibu profilakses un kontroles centrs

# Hepatitis B acute and chronic Incidence rate per 100 000 population by age group and sex, 2010-2014

## Hepatitis B acute



## Hepatitis B chronic



2010 -2014 in children under 1 year hepatitis B acute – one case, chronic – five cases

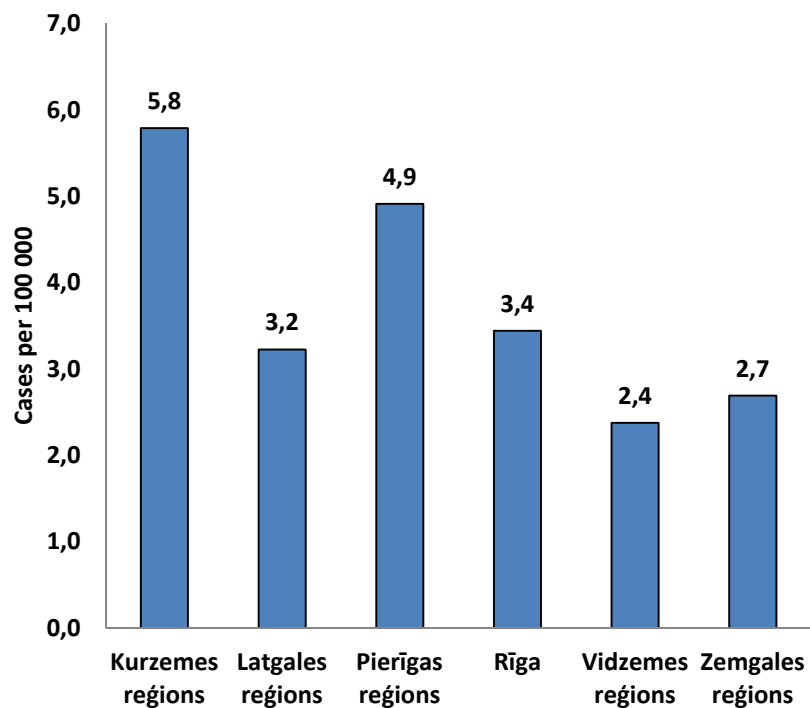


Slimību profilakses un  
kontroles centrs

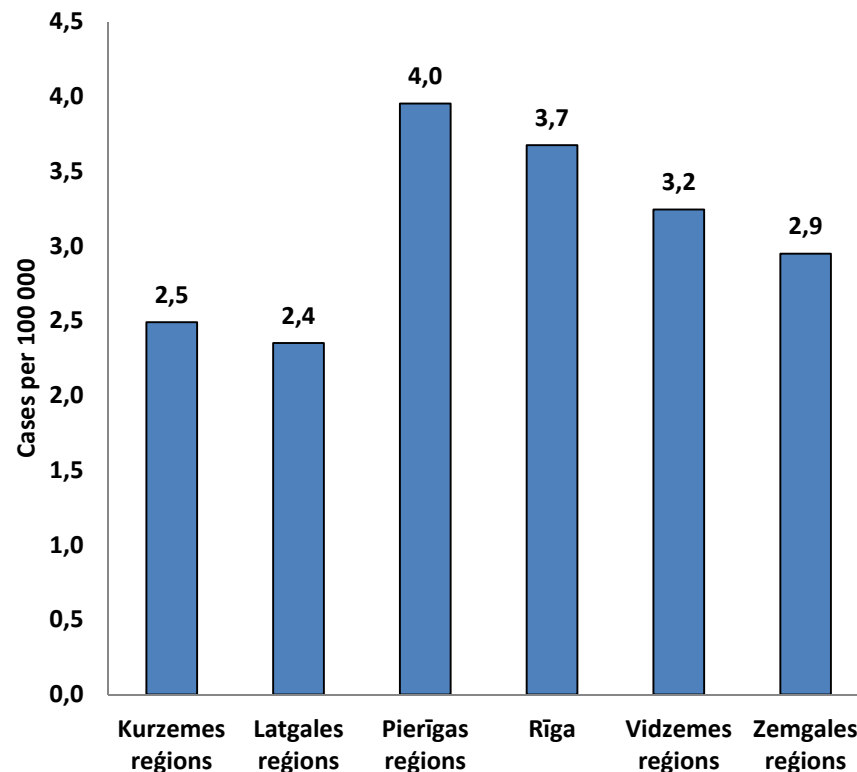
# Hepatitis B

## Incidence rate per 100 000 population in regions, 2010–2014 (average)

### Hepatitis B acute (388)



### Hepatitis B chronic\* (332)

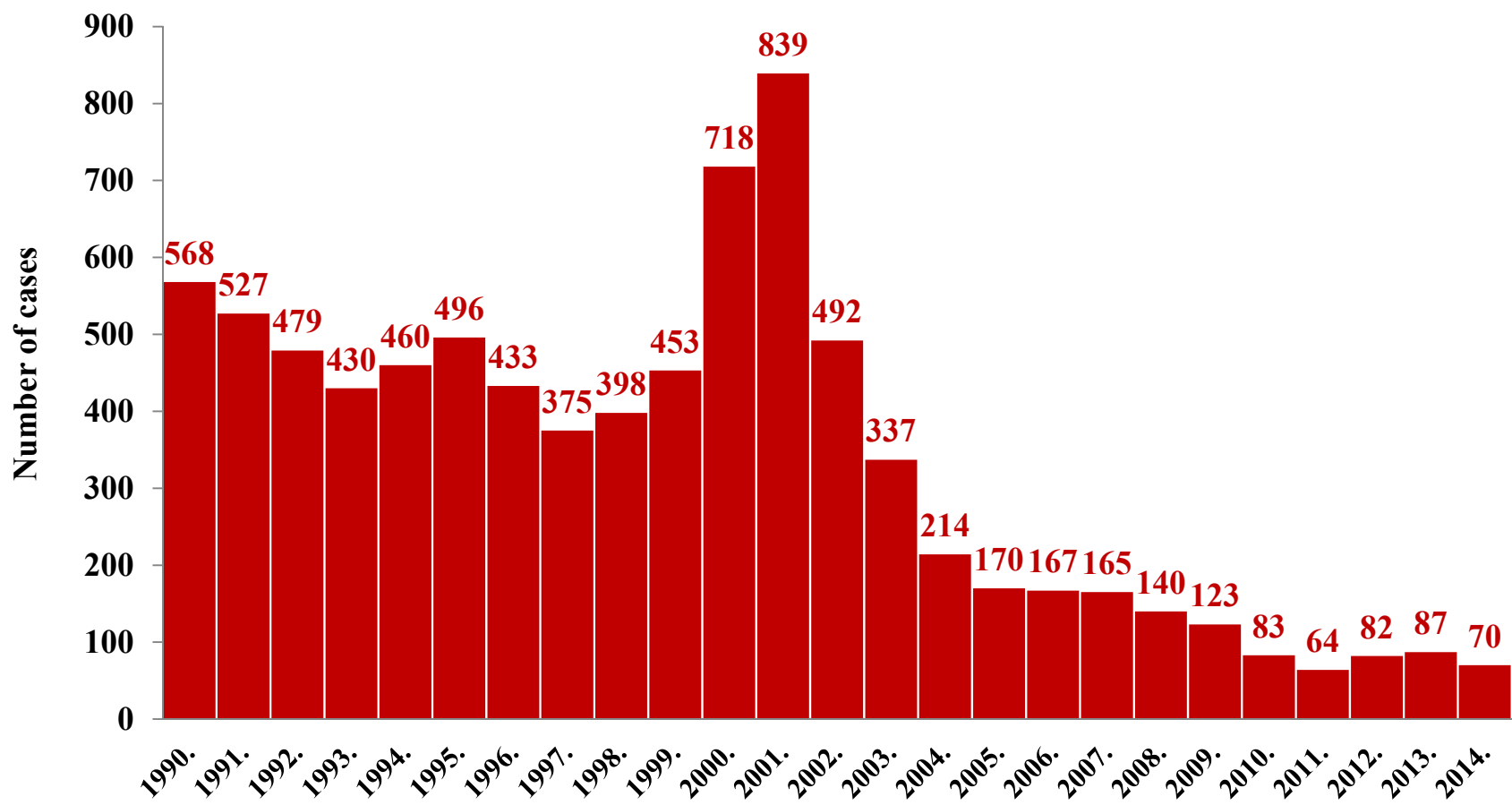


\*(B18.0-18.1)



Slimību profilakses un  
kontroles centrs

# Hepatitis B acute by date of notification in 1992 -2014



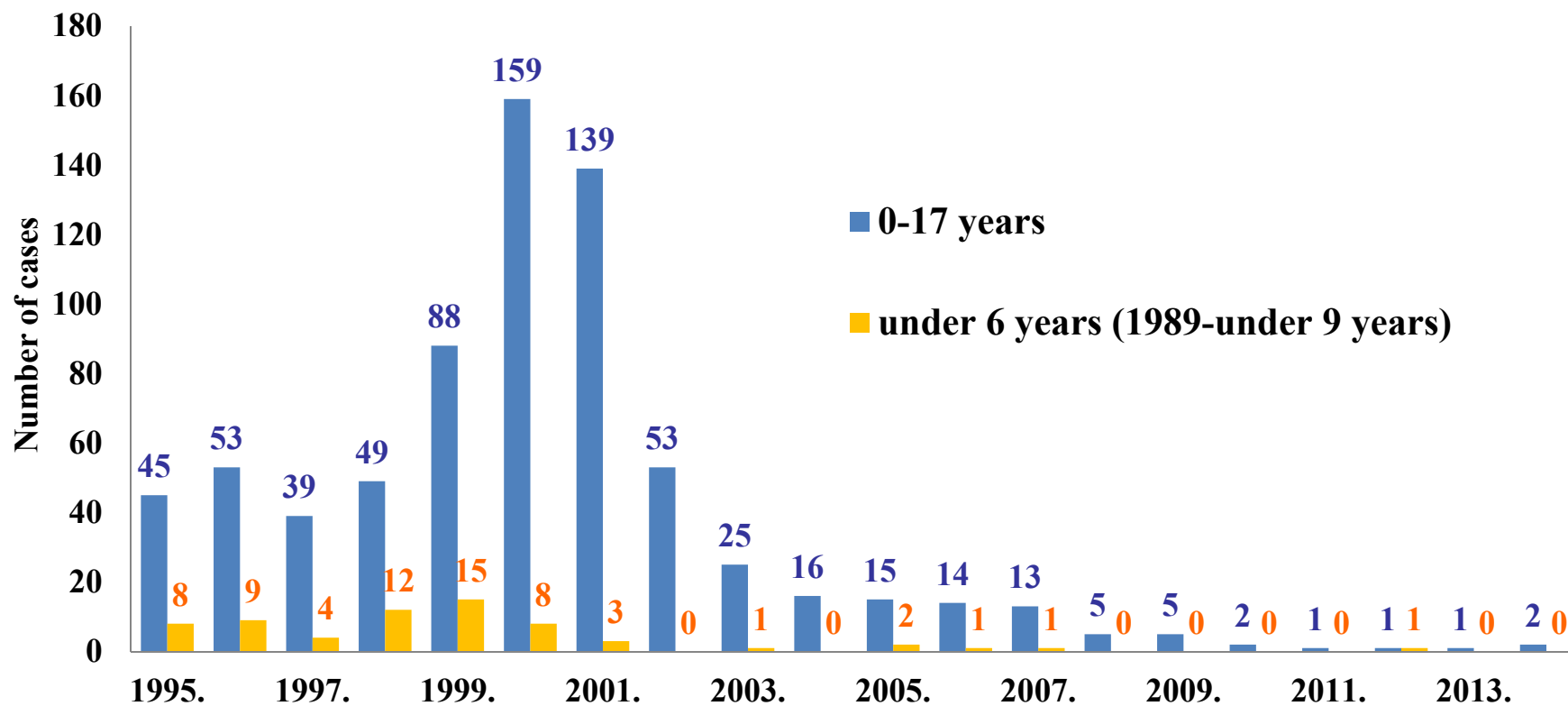




Slimību profilakses un  
kontrolē centrs

# Hepatitis B acute

## Cases among children aged 0-17



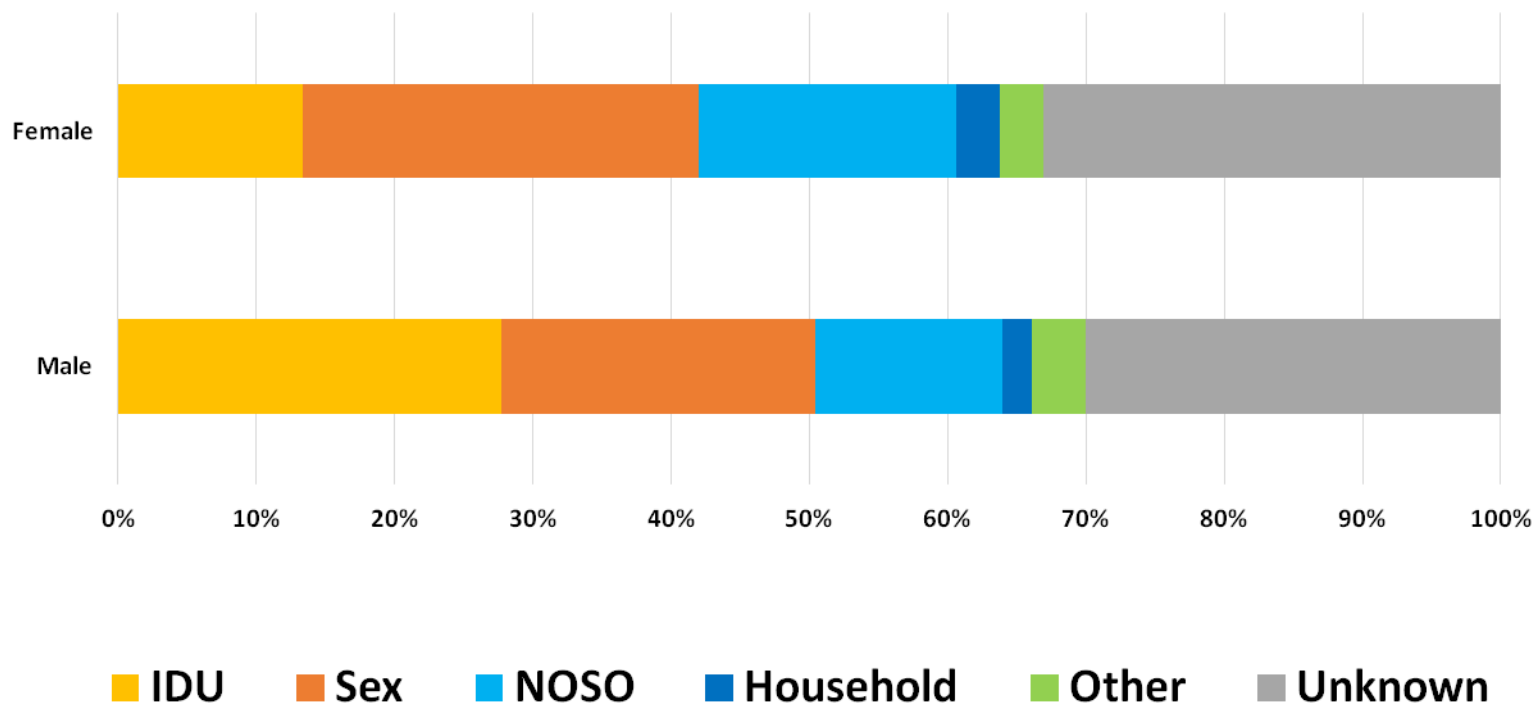


Slimibu profilakses un kontroles centrs

# Hepatitis B acute, 2006-2014

## Prevalence of risk factors by gender,

N=980

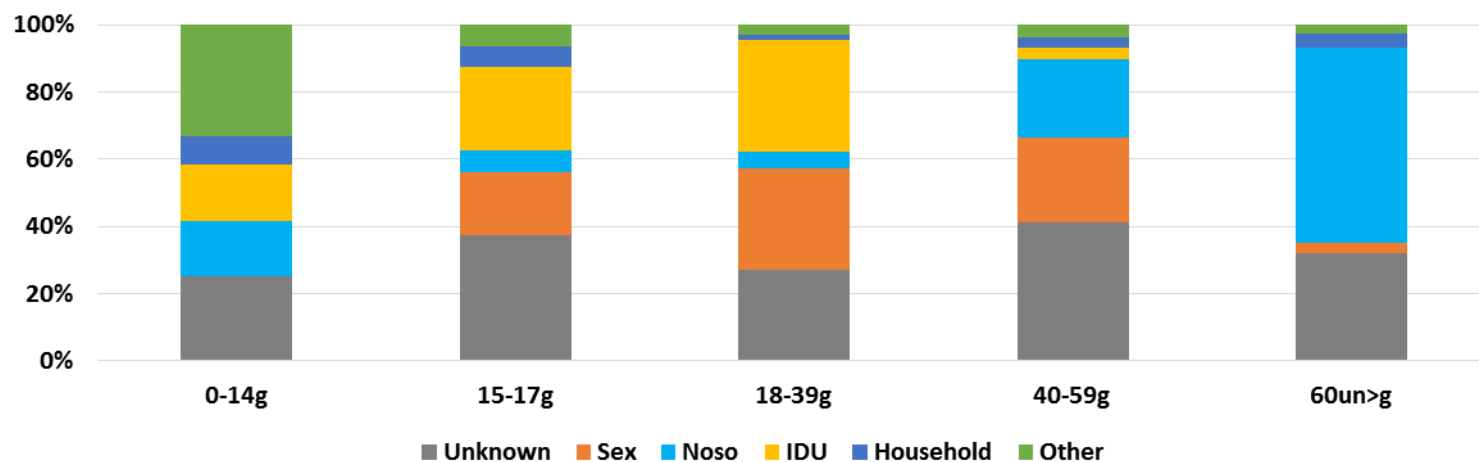
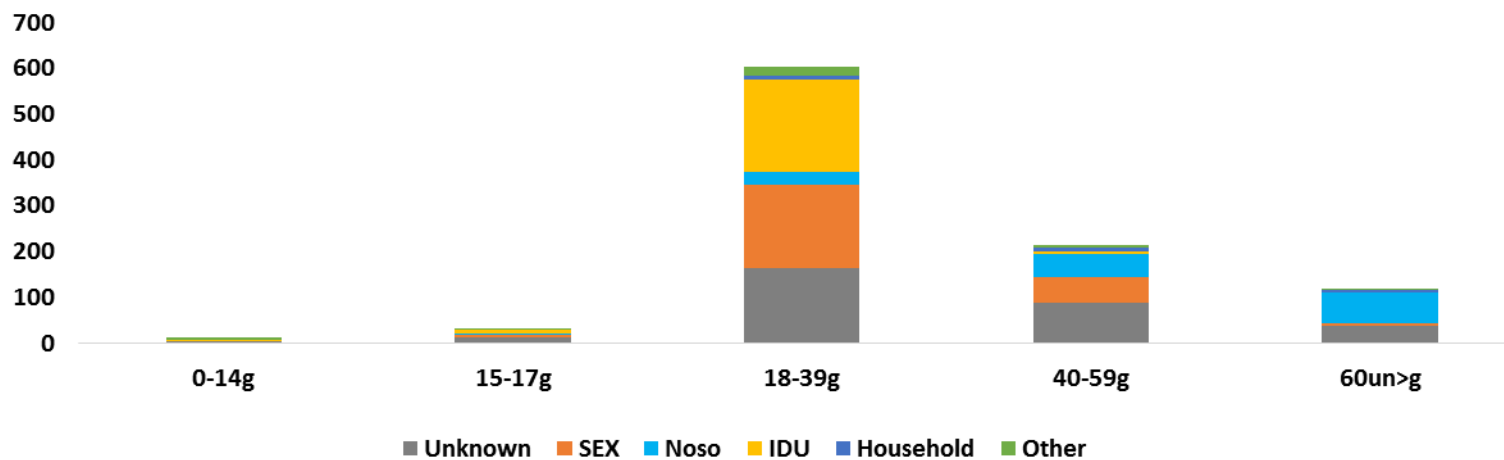




Slimibu profilakses un kontroles centrs

# Hepatitis B acute, 2006-2014

## Prevalence of risk factors in age group

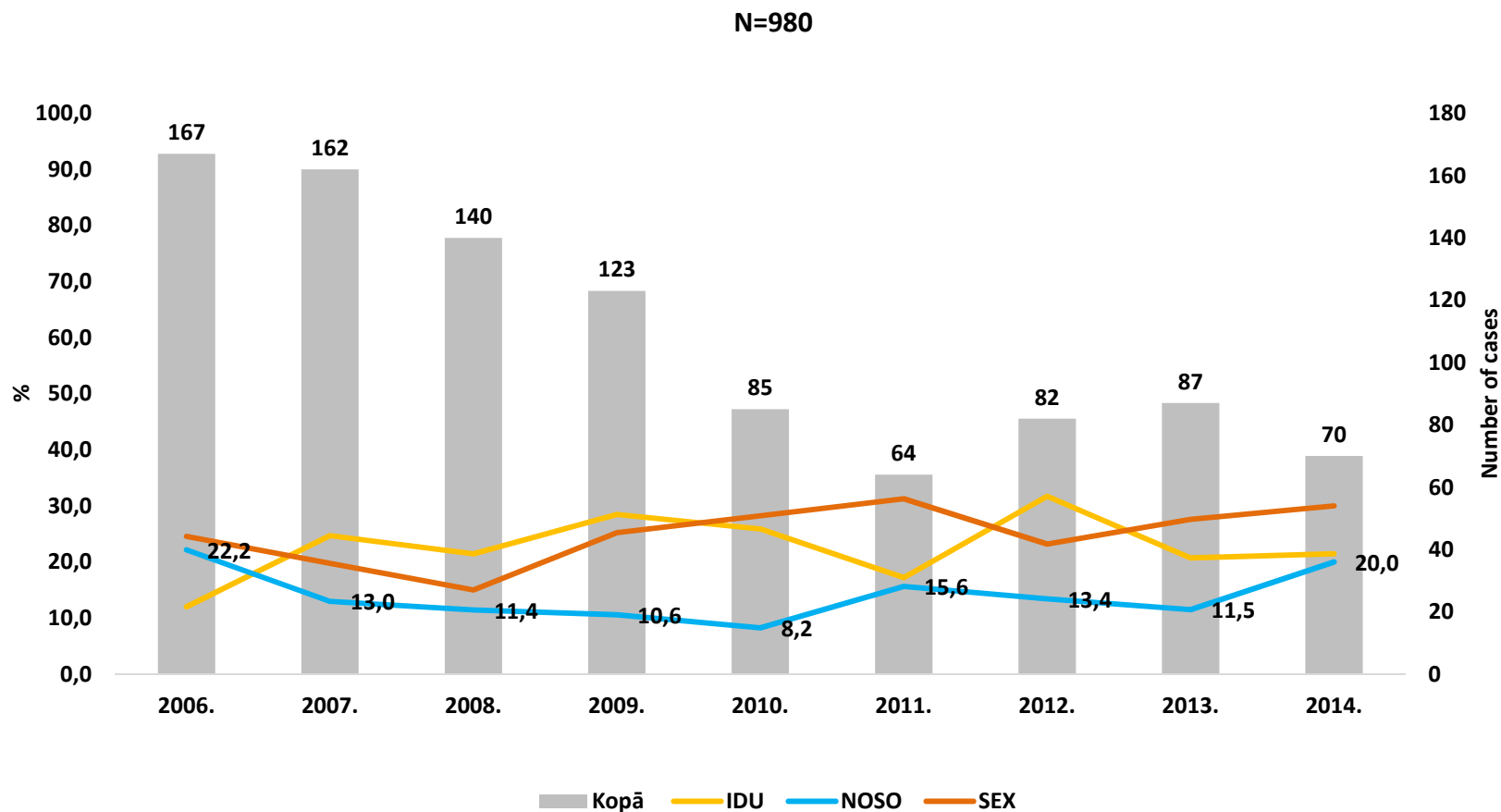




Slimību profilakses un kontroles centrs

# Hepatitis B acute

## Risk factors trends from 2006 to 2014

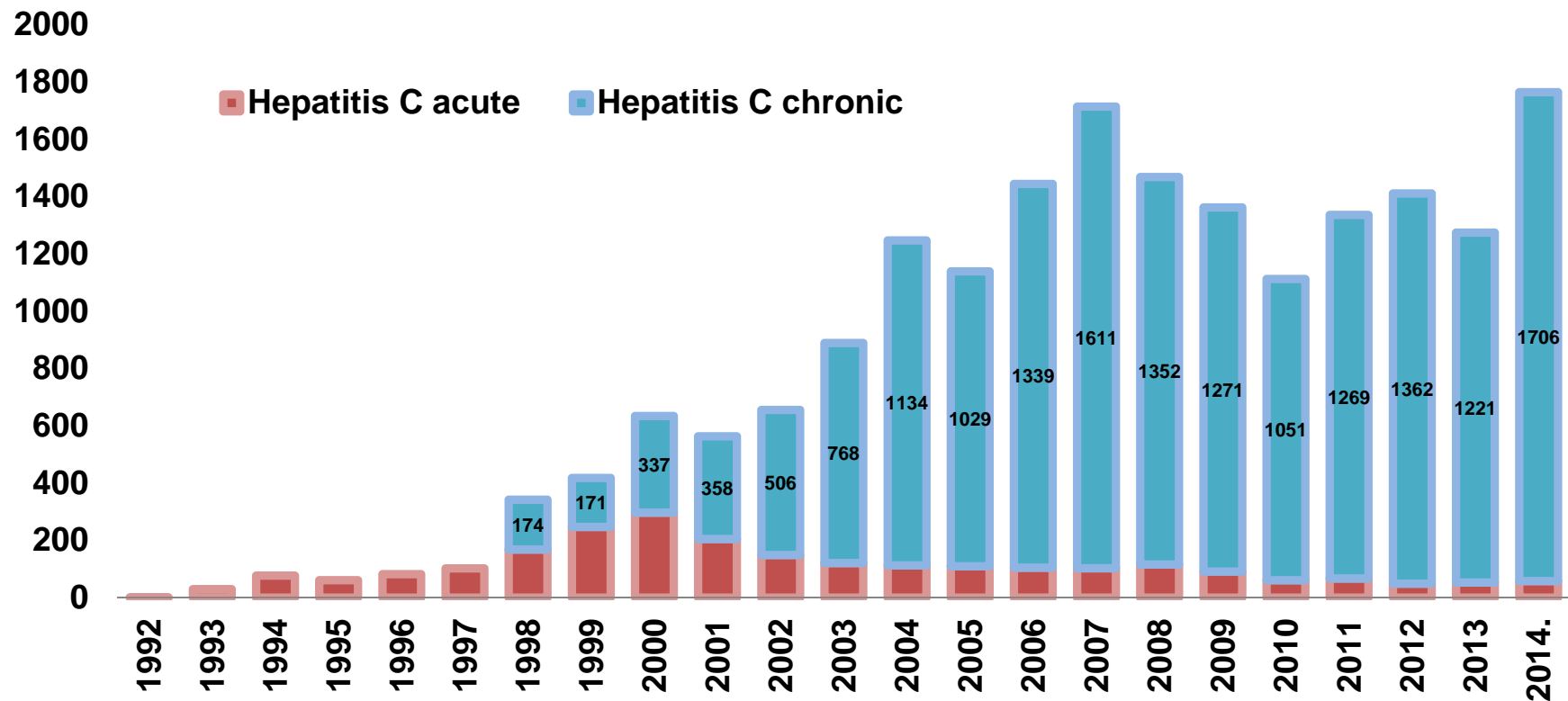


Nosocomial transmission 165 case of 980 or 16.5%



Slimību profilakses un  
kontrols centrs

# Surveillance of hepatitis C in Latvia

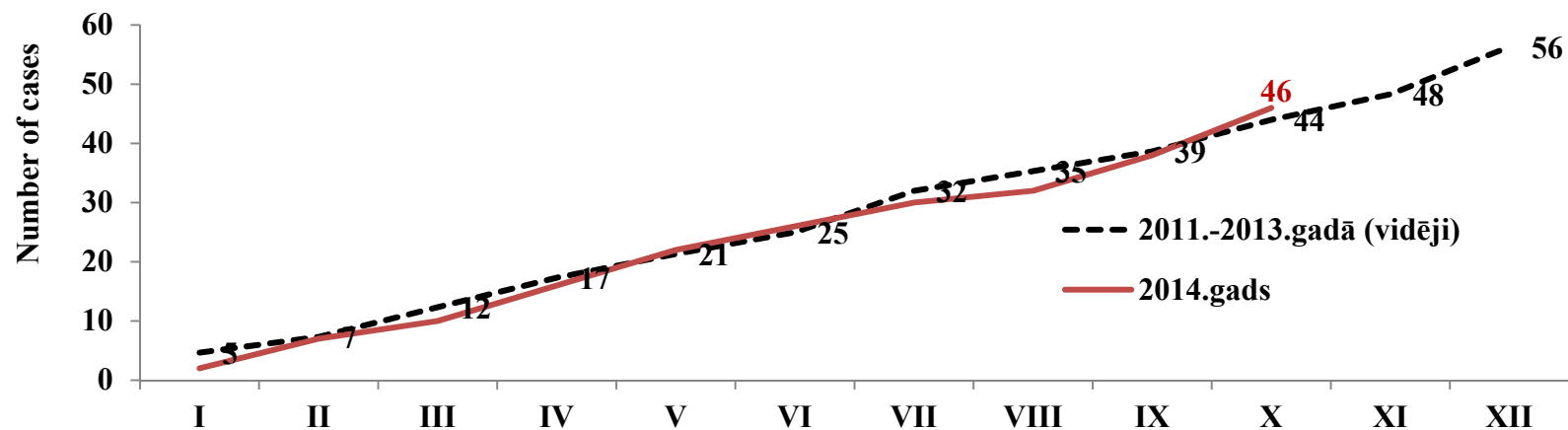




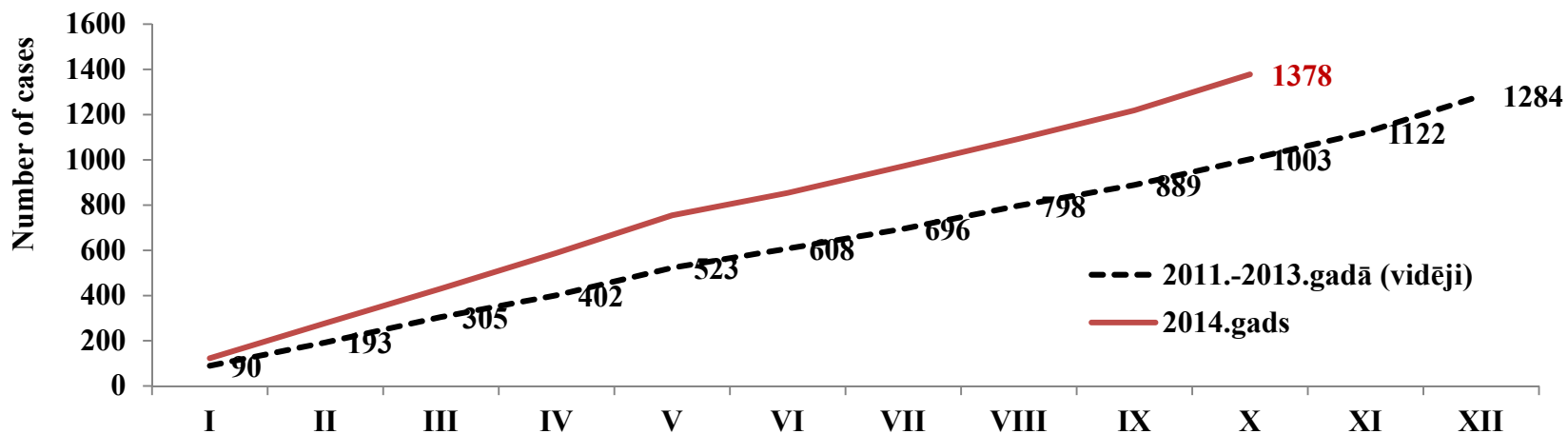
Slimību profilakses un  
kontroles centrs

# Hepatitis C, 2015 Jan-Oct

## Hepatitis C acute



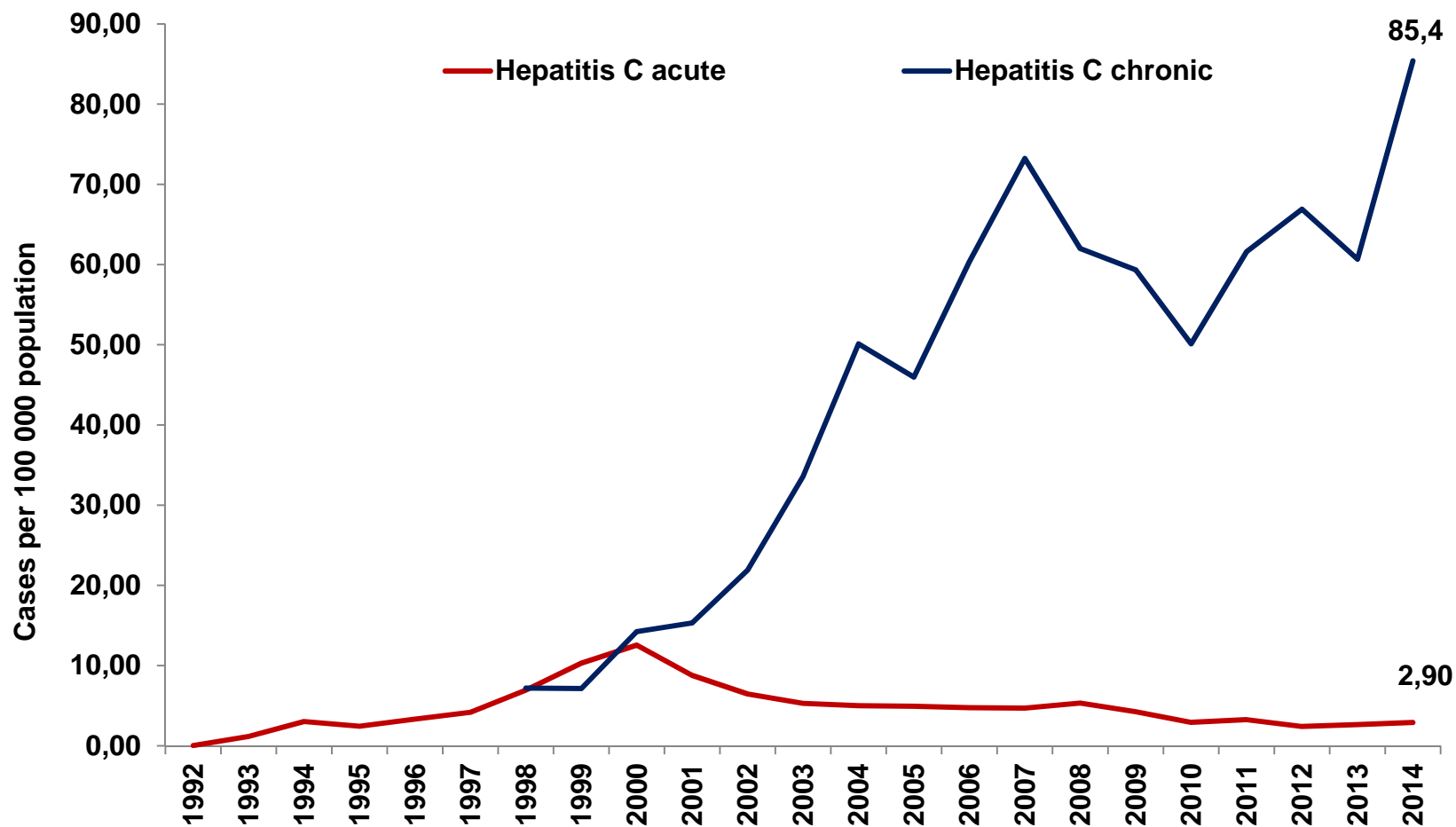
## Hepatitis C chronic





Slimību profilakses un  
kontrolē centrs

# Hepatitis C acute and chronic Incidence rate per 100 000 population

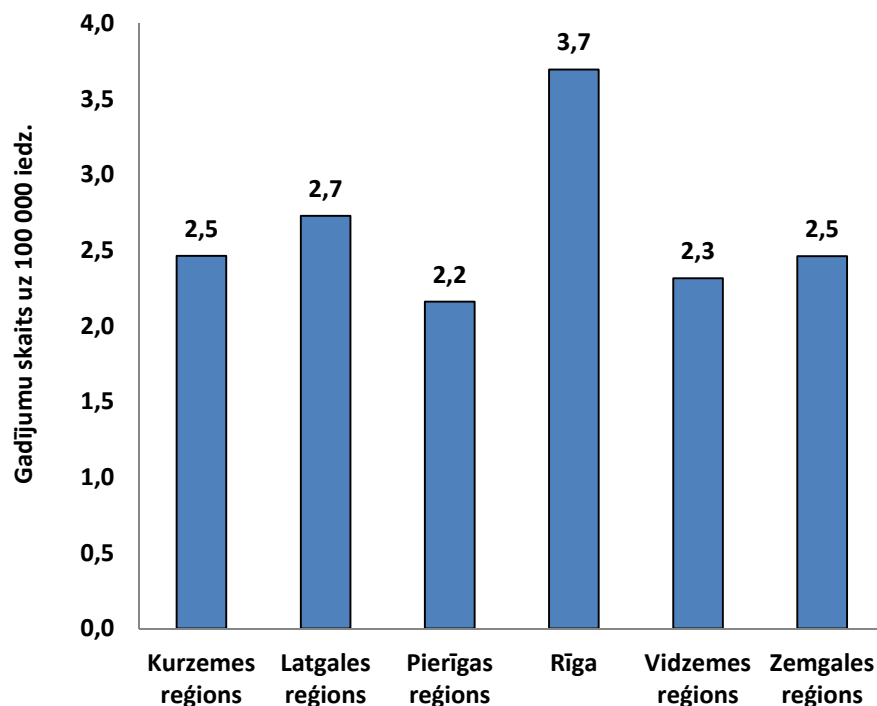




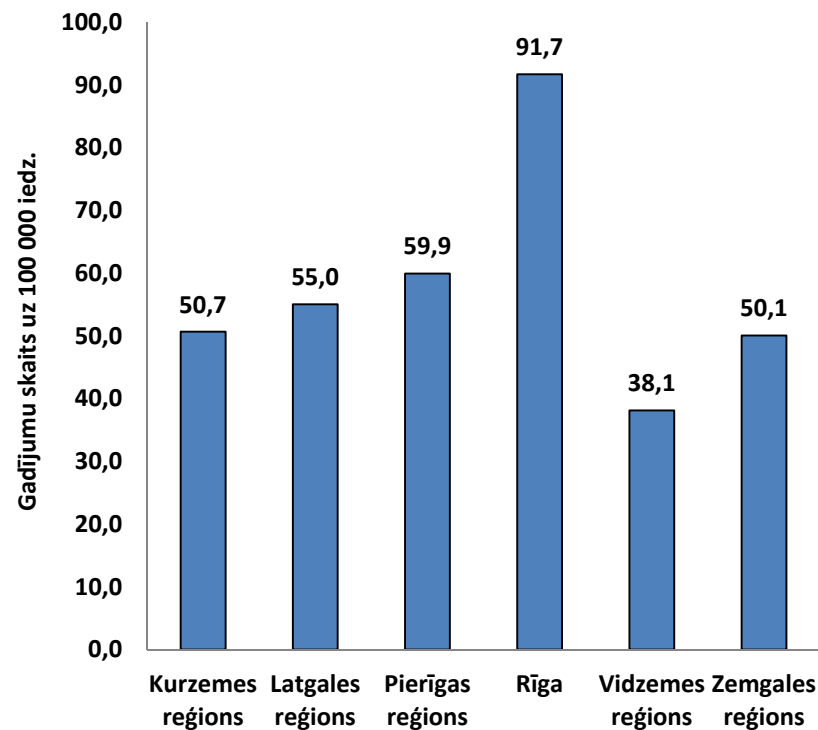
Slimību profilakses un  
kontroles centrs

# Hepatitis C acute and chronic Incidence rate per 100 000 population by regions in 2010-2014

## Hepatitis C acute (288)



## Hepatitis C chronic (6609)



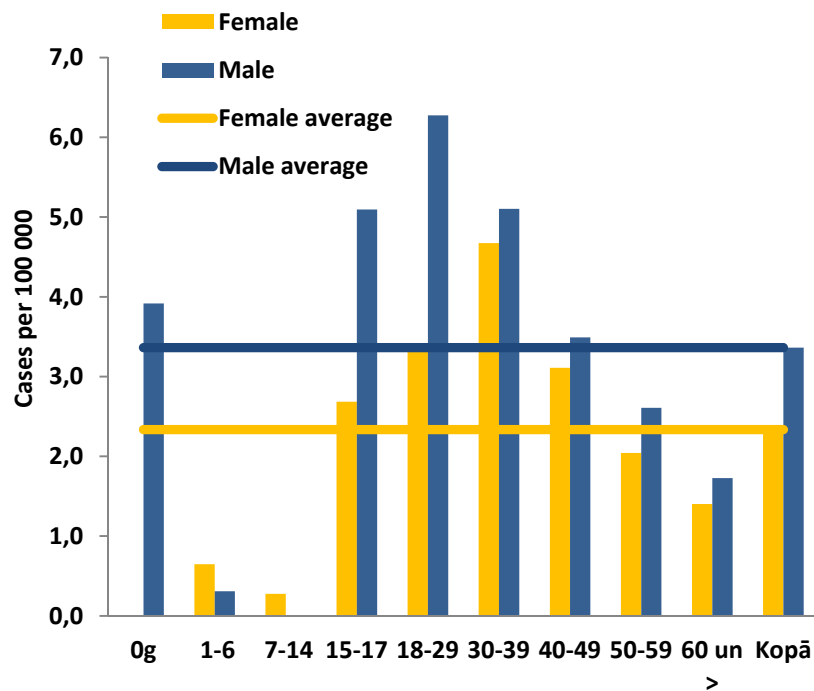




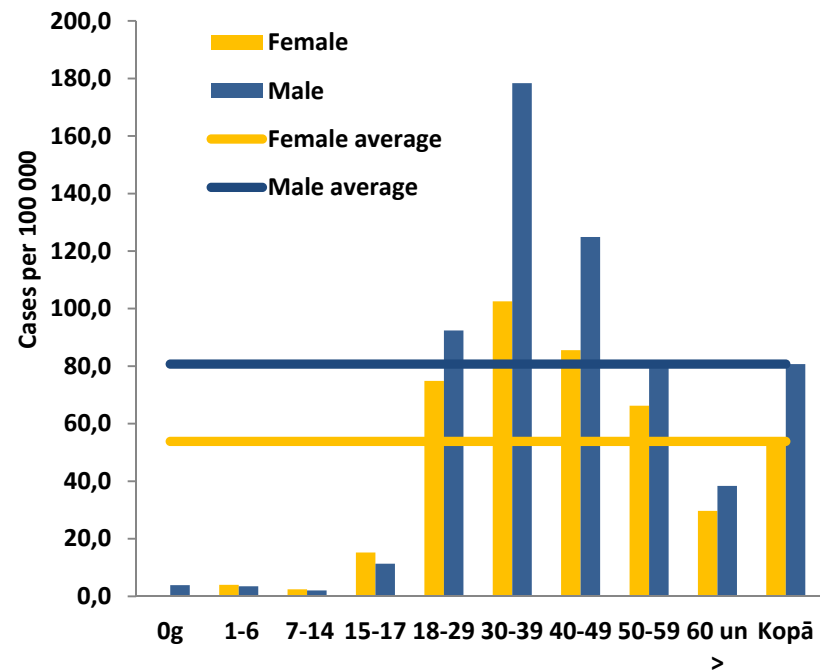
Slimibu profilakses un kontroles centrs

# Hepatitis C acute and chronic Incidence rate per 100 000 population by age group, 2010-2014

## Hepatitis C acute



## Hepatitis C chronic

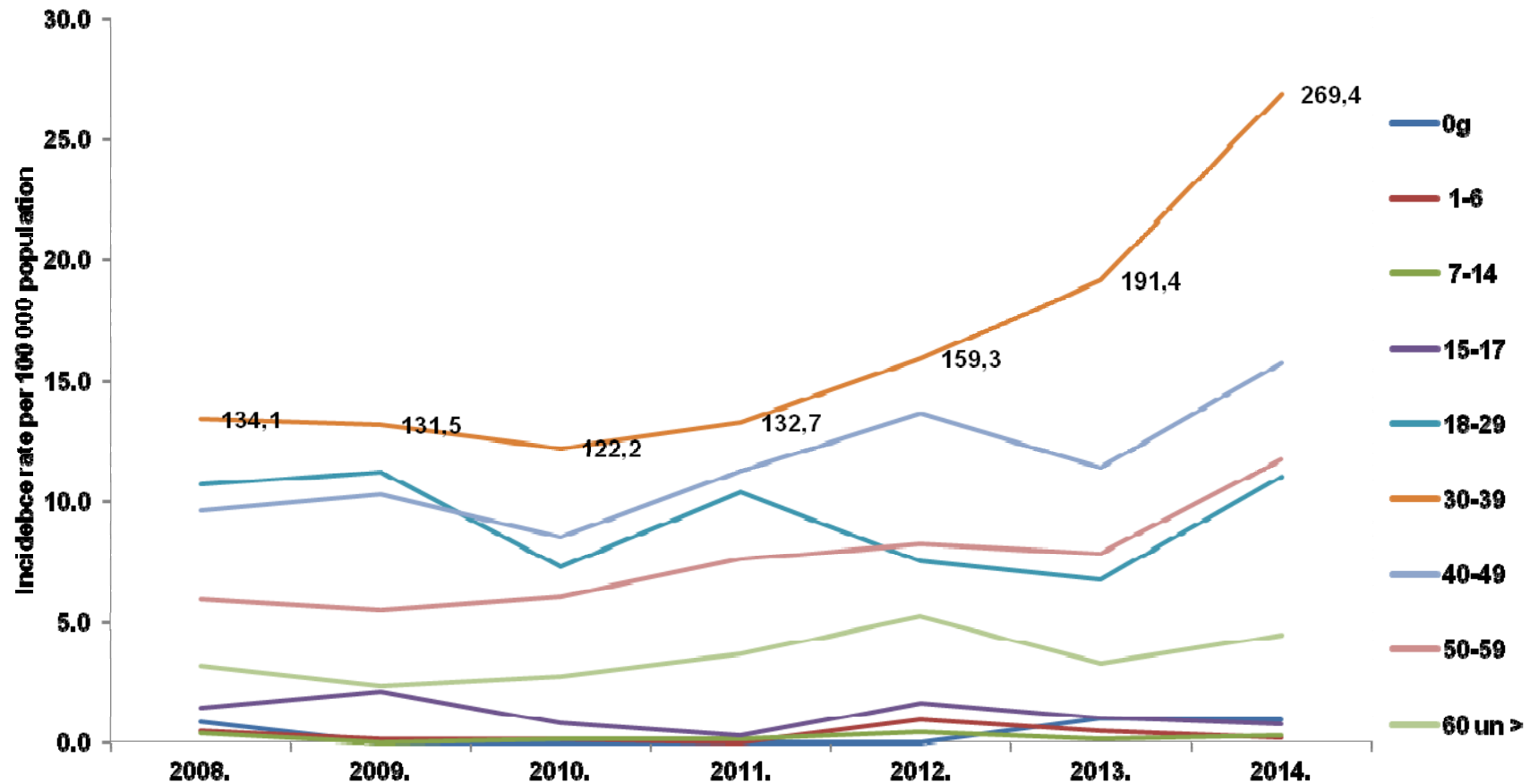


2010 -2014 in children under 1 year hepatitis C acute – two cases



Slimību profilakses un kontroles centrs

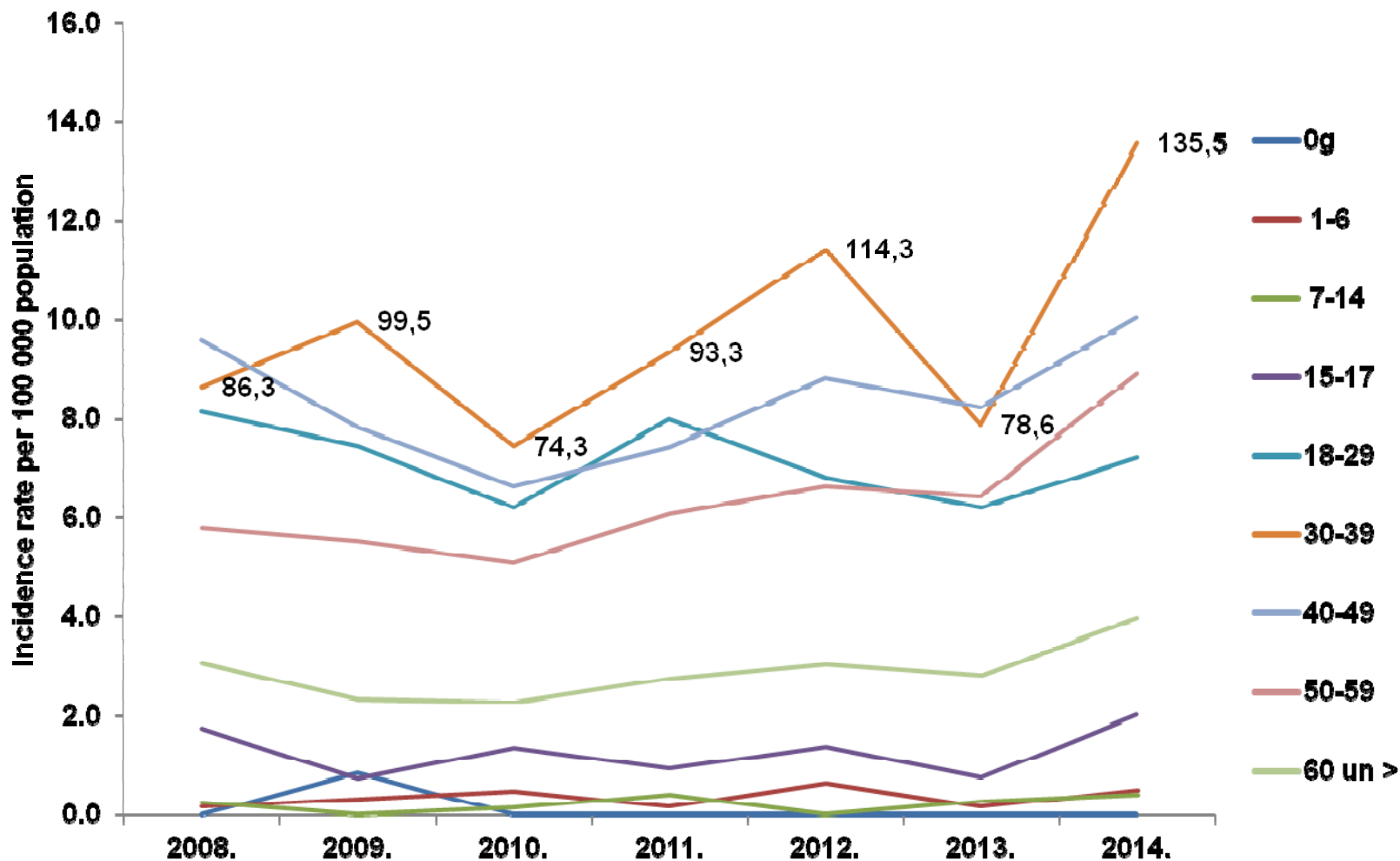
# Hepatitis C incidence rate in males by age groups from 2008 to 2014





Slimibu profilakses un kontroles centrs

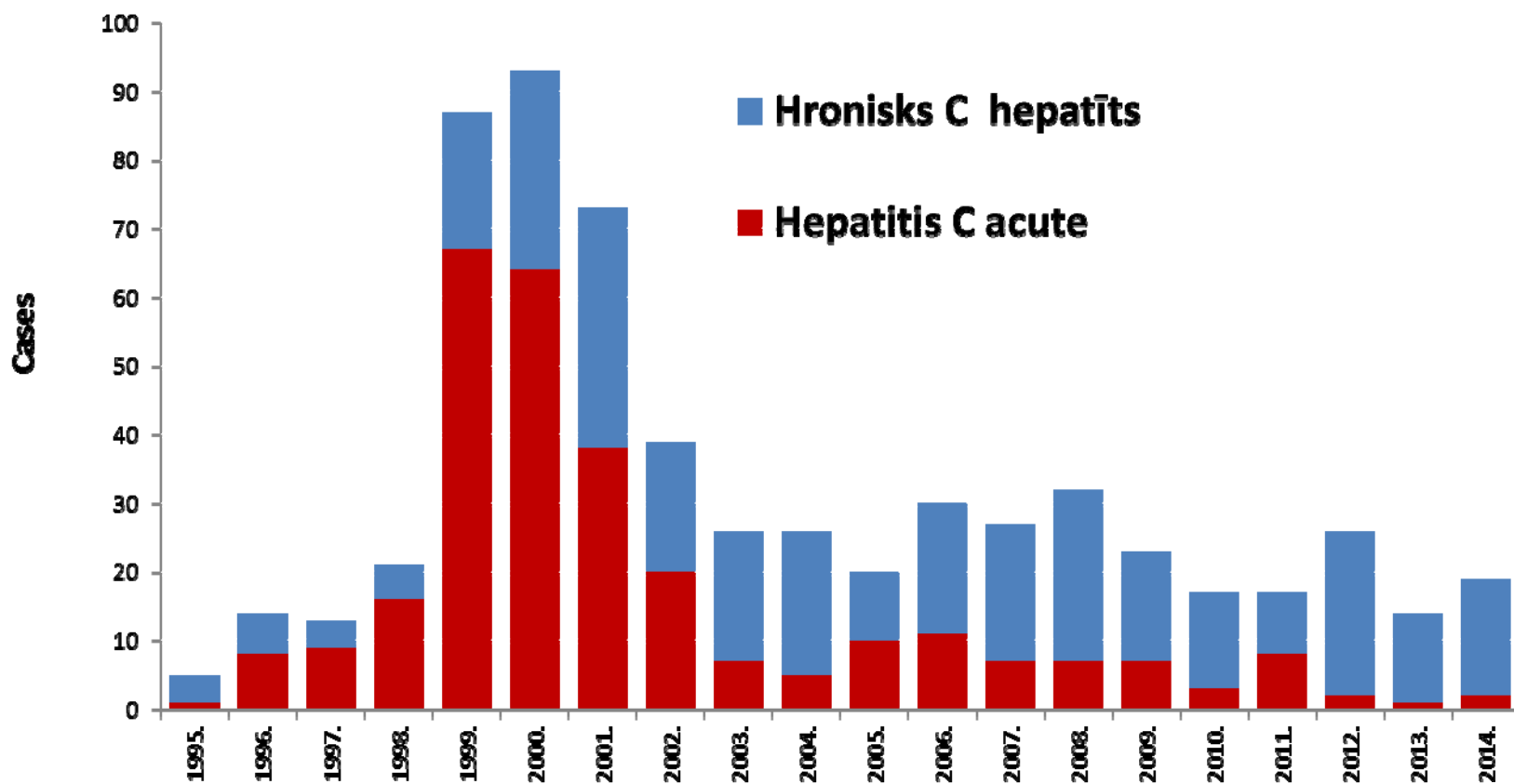
# Hepatitis C incidence rate in females by age groups from 2008 to 2014





Slimību profilakses un  
kontrolēšanas centrs

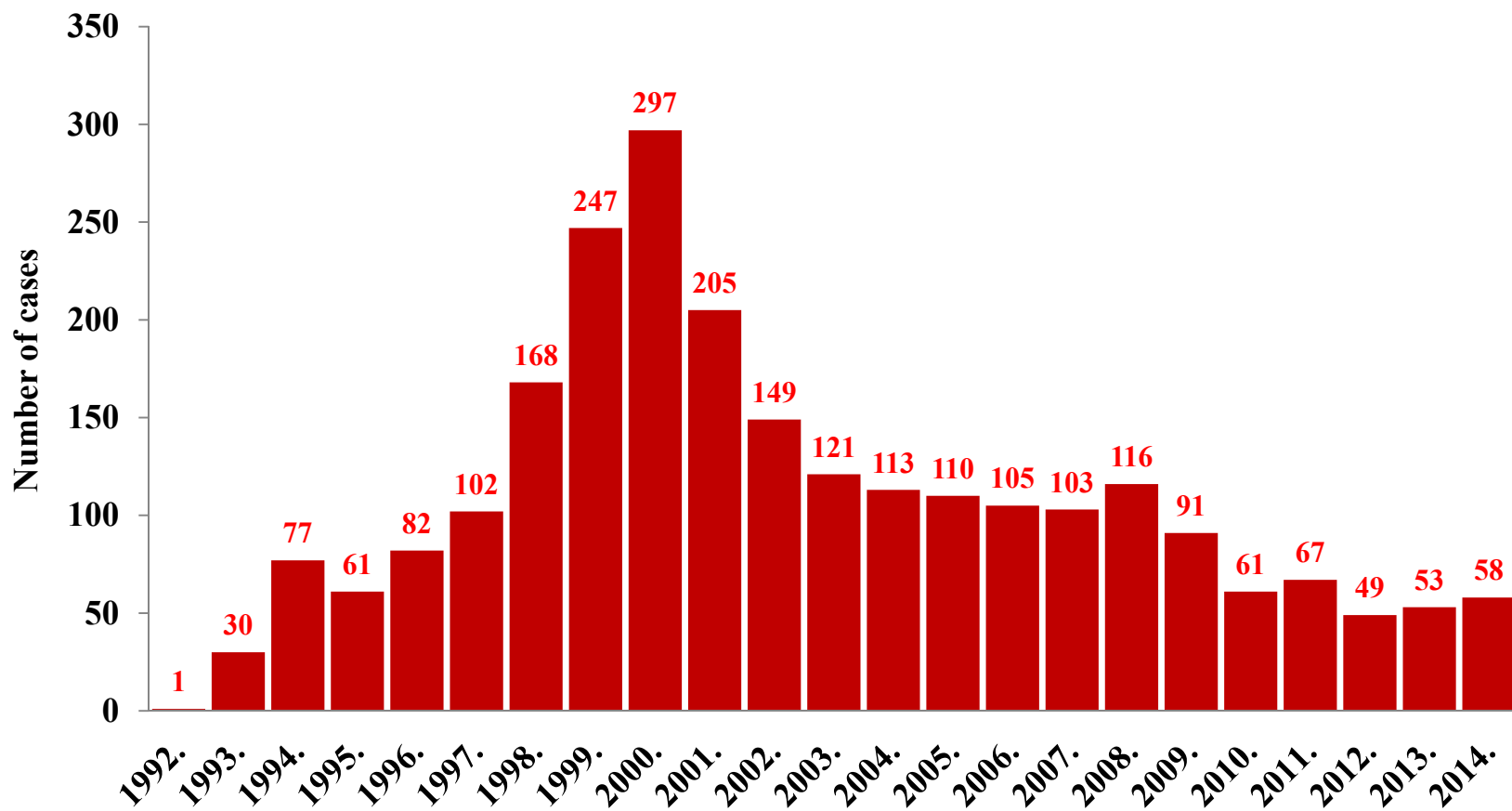
# Hepatitis C in children aged 0-17 years





Slimību profilakses un  
kontrolēšanas centrs

# Hepatitis C acute in 1992 -2014



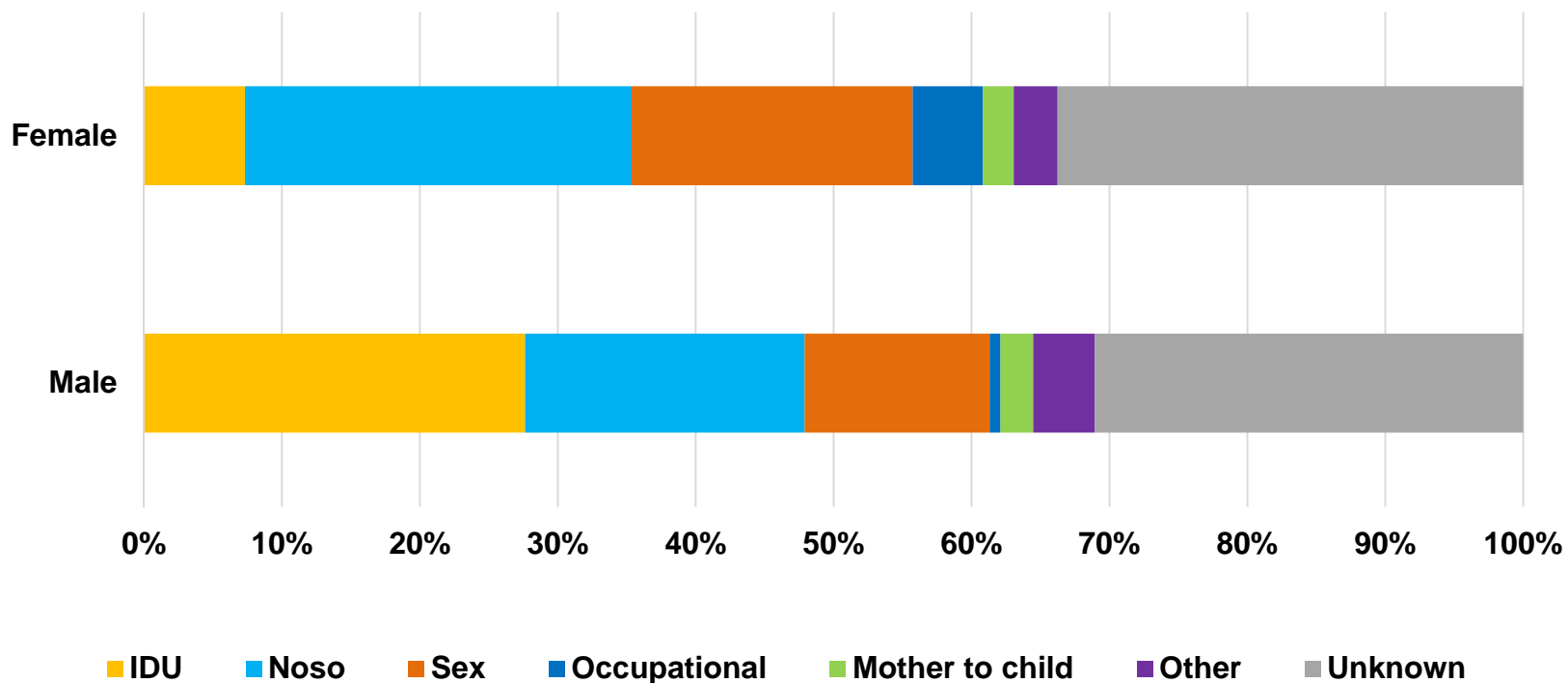


Slimibu profilakses un kontroles centrs

# Hepatitis C acute, 2006-2014

## Prevalence of risk factors by gender

N=694

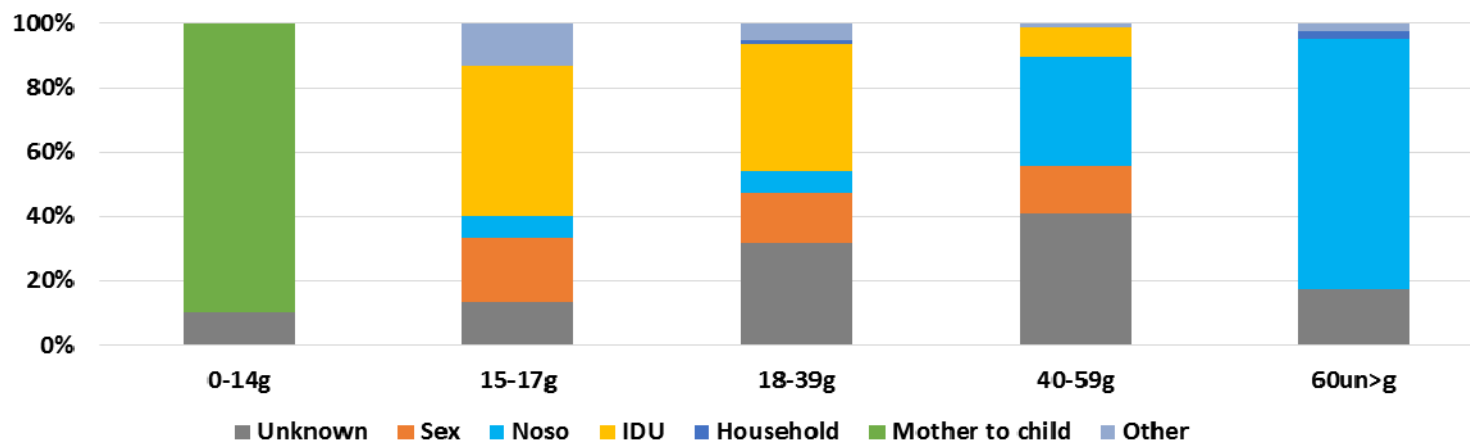
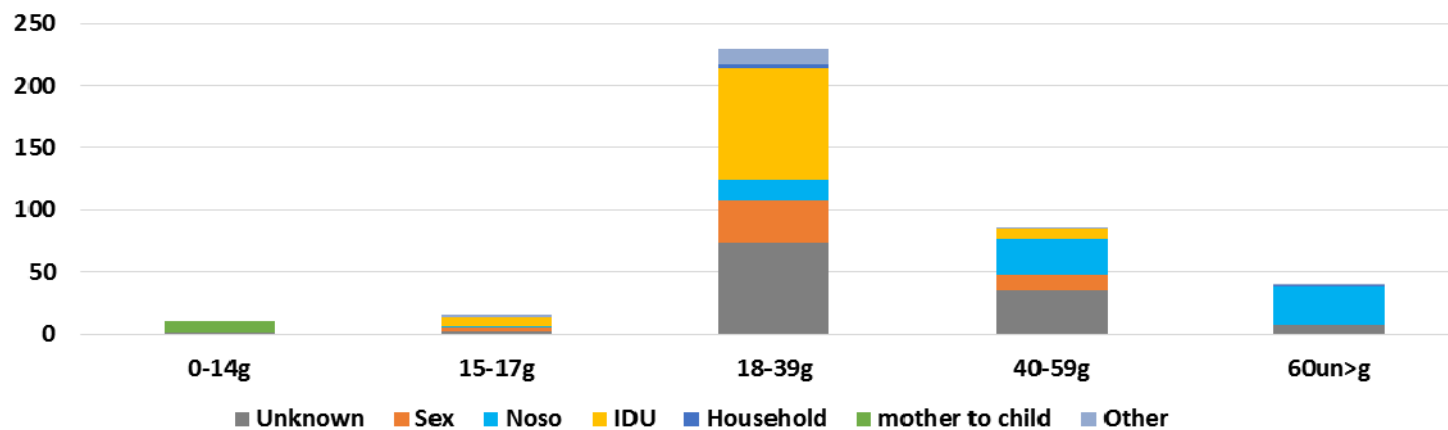




Slimibu profilakses un kontroles centrs

# Hepatitis C acute, 2006-2014

## Prevalence of risk factors in age group

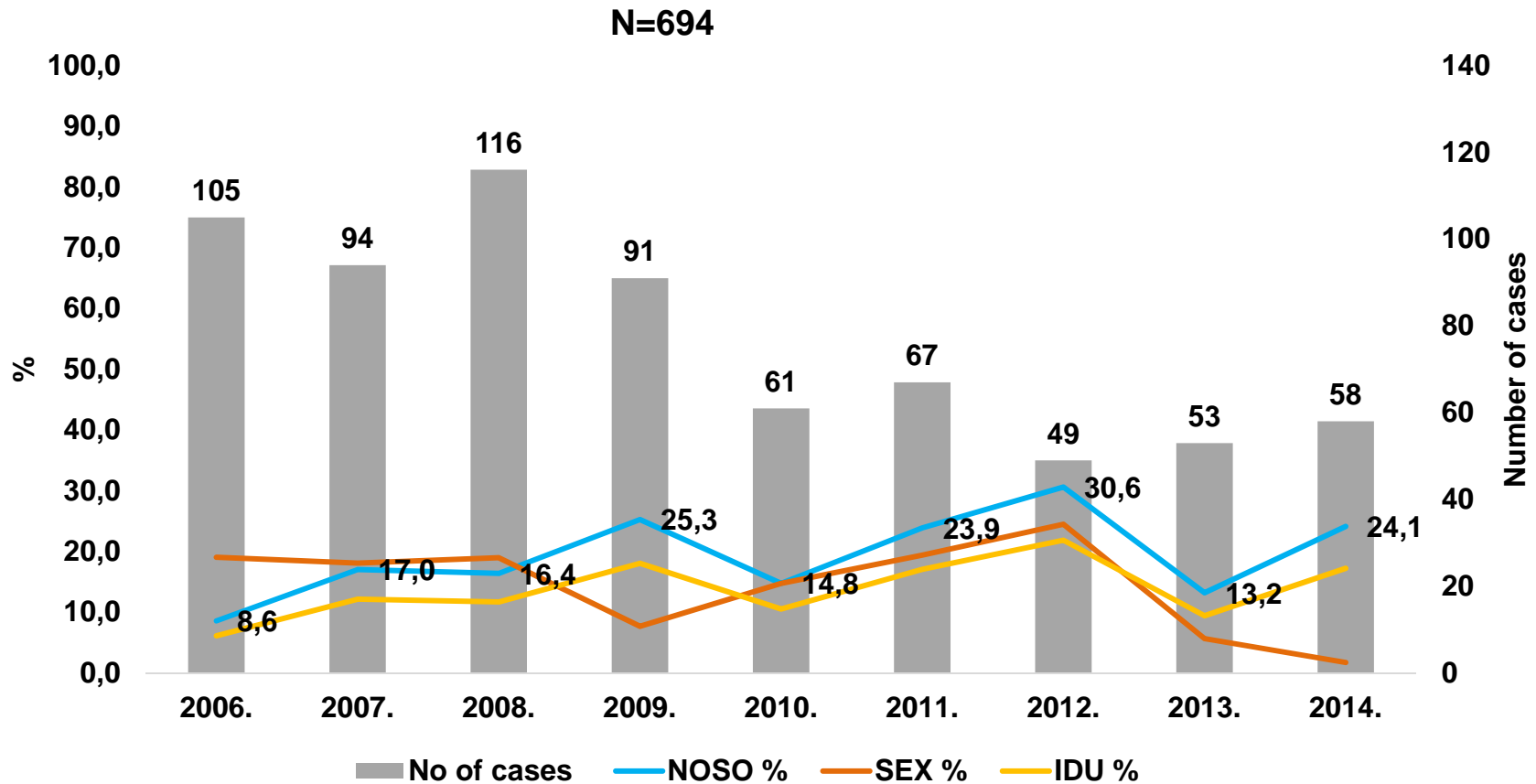




Slimību profilakses un kontroles centrs

# Hepatitis C acute

## Risk factors trends in 2006-2014



Nosocomial transmission 166 cases of 694 or 23,9% average





Slimību profilakses un  
kontroles centrs

# Hepatitis B and C outbreaks, 2008 -2015 (Jan-Sep)

- **Hepatitis B acute (24 outbreaks, 79 cases):**
  - 10 sexual contacts - 21 cases
  - 7 nosocomial - 39 cases in 6 hospitals
  - 3 household contacts –11 cases (in one social care setting and house)
  - 3 IDU - 6 cases
  - 1 homosexual contacts – 2 cases
- **Hepatitis C acute (6 outbreaks, 16 cases):**
  - 4 nosocomial - 12 cases in 3 hospitals and in 1 outpatients clinic
  - 1 ssexual contacts - 2 cases
  - 1 injecting drug use - 2 cases



Slimību profilakses un  
kontrols centrs

# Guidance for infection control in healthcare setting for VHB/VHC/HIV



LATVIJAS REPUBLIKAS VESELĪBAS MINISTRIJA

**SLIMĪBU PROFILAKSES UN KONTROLES CENTRS**

Dunties iela 22, Rīga, LV-1005 • Tālr. 67501590 • Fakss 67501591 • E-pasts: info@spkc.gov.lv • Reģ. Nr. 90009756700

## EPIDEMIOLOĢIJAS BIĻETENS

Nr. 23 (1349)

2014.gada 24.aprīlis

### Ieteikumi B hepatīta, C hepatīta un HIV infekcijas profilaksei ārstniecības iestādēs

(Aktualizēts 2014. gada 24. aprīlī)

#### Saturs

Ievads .....	2
I Ieteikumos izmantotie termini .....	3
II Ieteikumu saikne ar Latvijas Republikas ārējiem normatīvajiem aktiem .....	3
III HBV, HCV un HIV pārvešana .....	4
IV Vakcinācija un obligātās veselības pārbaudes .....	5
V Individuālo aizsardzības līdzekļu lietošana .....	6
VI Pēcspozīcijas profilakse .....	8
VII Pacientu aprūpe .....	10
VIII Dezinfekcija un sterilizācija .....	11
IX Telpu uzkopšana un veļas aprīte .....	12
X Bīstamo atkritumu apsaimniekošana .....	12
XI Saslimšanas gadījumu reģistrācija un epidemioloģiskā izmeklēšana .....	14
Literatūra .....	16

<http://www.spkc.gov.lv/arstniecibas-personam/714/ieteikumi-b-hepatita-c-hepatita-un-hiv-infekcijas-profilaksei-arstniecibas-iestades>



Slimību profilakses un  
kontroles centrs

# HBV/HCV prevalence in different groups of population

iedzīvotāju	% HBsAg + (gads)	% Anti-HCV + (gads)
General population	-	2.4 % (2011) <sup>1</sup>
Blood donors (first donation)	0.5 % (2013) <sup>2</sup>	1.5% (2013) <sup>2</sup>
<b>Risk group:</b>		
Injecting drug users	3.0% (2013) <sup>4</sup>	<b>83.7% (2013)<sup>4</sup></b>
MSM	8.8% (2013) <sup>5</sup>	2.0% (2013) <sup>5</sup>
Prisoners	7% (2014) <sup>6</sup>	<b>34% (2014)<sup>6</sup></b>



Slimību profilakses un  
kontroles centrs

# Conclusion

- **Increasing incidence rate of chronic hepatitis C among 18-39 age group**
- **The main risk factors for young people - IDU, sexual route, for the elderly – nosocomial**
- **Significant risk in the healthcare setting**
- **About 30% risk factors are unknown**



Slimibu profilakses un  
kontroles centrs

# Challenges

- **Screening programs among risk groups**
- **Confirmatory testing free of charge**
- **Infection control measures in healthcare setting**
- **Education measures of hepatitis B/C prevention issues**
- **Vaccination against hepatitis B/A for chronic hepatitis C patients, risk groups**
- **Epidemiological surveillance of liver cirrhosis and HCC**
- **Implementing of the HIV / AIDS, STI and hepatitis B/C, prevention plan**



Slimību profilakses un  
kontroles centrs

# Thank you

